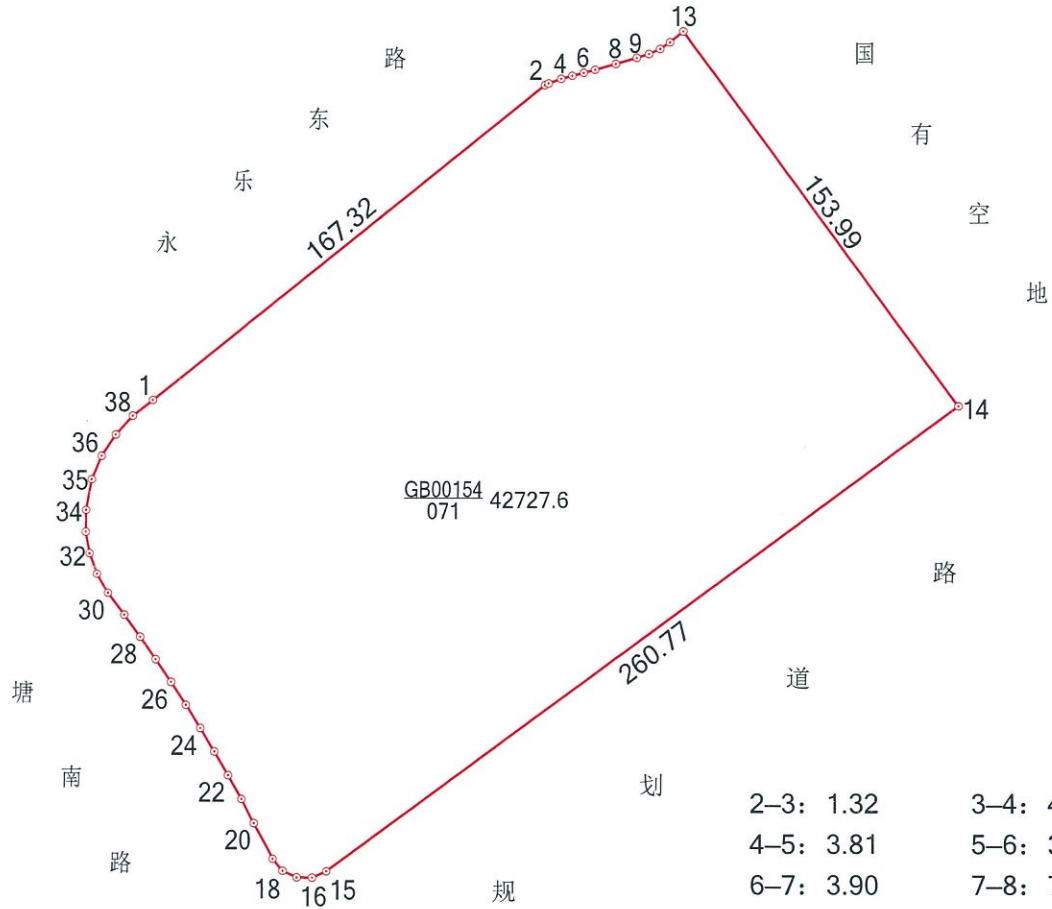


# 宗 地 图

3493.75-40530.00,  
3494.00-40530.00,  
3494.00-40530.25

320292014200GB00154



2-3: 1.32	3-4: 4.44
4-5: 3.81	5-6: 3.90
6-7: 3.90	7-8: 7.21
8-9: 7.21	9-10: 4.22
10-11: 4.08	11-12: 3.97
12-13: 5.72	15-16: 5.13
16-17: 5.13	17-18: 5.13
18-19: 5.13	19-20: 13.33
20-21: 9.06	21-22: 9.06
22-23: 9.06	23-24: 9.06
24-25: 9.06	25-26: 9.06
26-27: 9.06	27-28: 9.06
28-29: 9.06	29-30: 9.06
30-31: 7.24	31-32: 7.24
32-33: 7.24	33-34: 7.24
34-35: 10.31	35-36: 8.47
36-37: 8.47	37-38: 8.47
38-1: 8.47	



1:2500

绘图员: 杨程

审核员: 常鹏

2018年10月9日

## 界址点成果表

宗地号 320292014200GB00154

权利人 XDG-2018-40号A地块

宗地面积 (平方米) 42727.6

折合亩

64.09

### 界址点坐标

顺序号	点号	坐标		边长 (m)	备注
		X (m)	Y (m)		
1	1.00	3494102.131	40530054.352	167.32	
2	2.00	3494206.816	40530184.877	1.32	
3	3	3494207.378	40530186.069	4.44	
4	4	3494208.938	40530190.221	3.81	
5	5	3494209.954	40530193.892	3.90	
6	6	3494210.937	40530197.671	3.90	
7	7	3494211.959	40530201.438	7.21	
8	8	3494213.909	40530208.383	7.21	
9	9	3494215.910	40530215.312	4.22	
10	10	3494217.201	40530219.333	4.08	
11	11	3494218.875	40530223.058	3.97	
12	12	3494221.108	40530226.343	5.72	
13	13	3494224.736	40530230.761	153.99	
14	14	3494100.754	40530322.099	260.77	
15	15	3493946.085	40530112.153	5.13	
16	16	3493943.996	40530107.469	5.13	
17	17.00	3493944.053	40530102.341	5.13	

## 界址点成果表

宗地号 320292014200GB00154

权利人 XDG-2018-40号A地块

宗地面积 (平方米) 42727.6

折合亩

64.09

### 界址点坐标

顺序号	点号	坐标		边长 (m)	备注
		X (m)	Y (m)		
17	17.00	3493944.053	40530102.341	5.13	
18	18.00	3493946.246	40530097.705	5.13	
19	19	3493950.174	40530094.408	13.33	
20	20	3493961.980	40530088.218	9.06	
21	21	3493969.958	40530083.931	9.06	
22	22	3493977.862	40530079.510	9.06	
23	23	3493985.690	40530074.957	9.06	
24	24	3493993.441	40530070.272	9.06	
25	25	3494001.112	40530065.458	9.06	
26	26	3494008.700	40530060.515	9.06	
27	27	3494016.205	40530055.445	9.06	
28	28	3494023.622	40530050.249	9.06	
29	29	3494030.951	40530044.929	9.06	
30	30	3494038.190	40530039.486	7.24	
31	31	3494044.441	40530035.838	7.24	
32	32	3494051.243	40530033.364	7.24	
33	33.00	3494058.376	40530032.142	7.24	

## 界址点成果表

宗地号 320292014200GB00154

权利人 XDG-2018-40号A地块

宗地面积 (平方米) 42727.6

折合亩

64.09

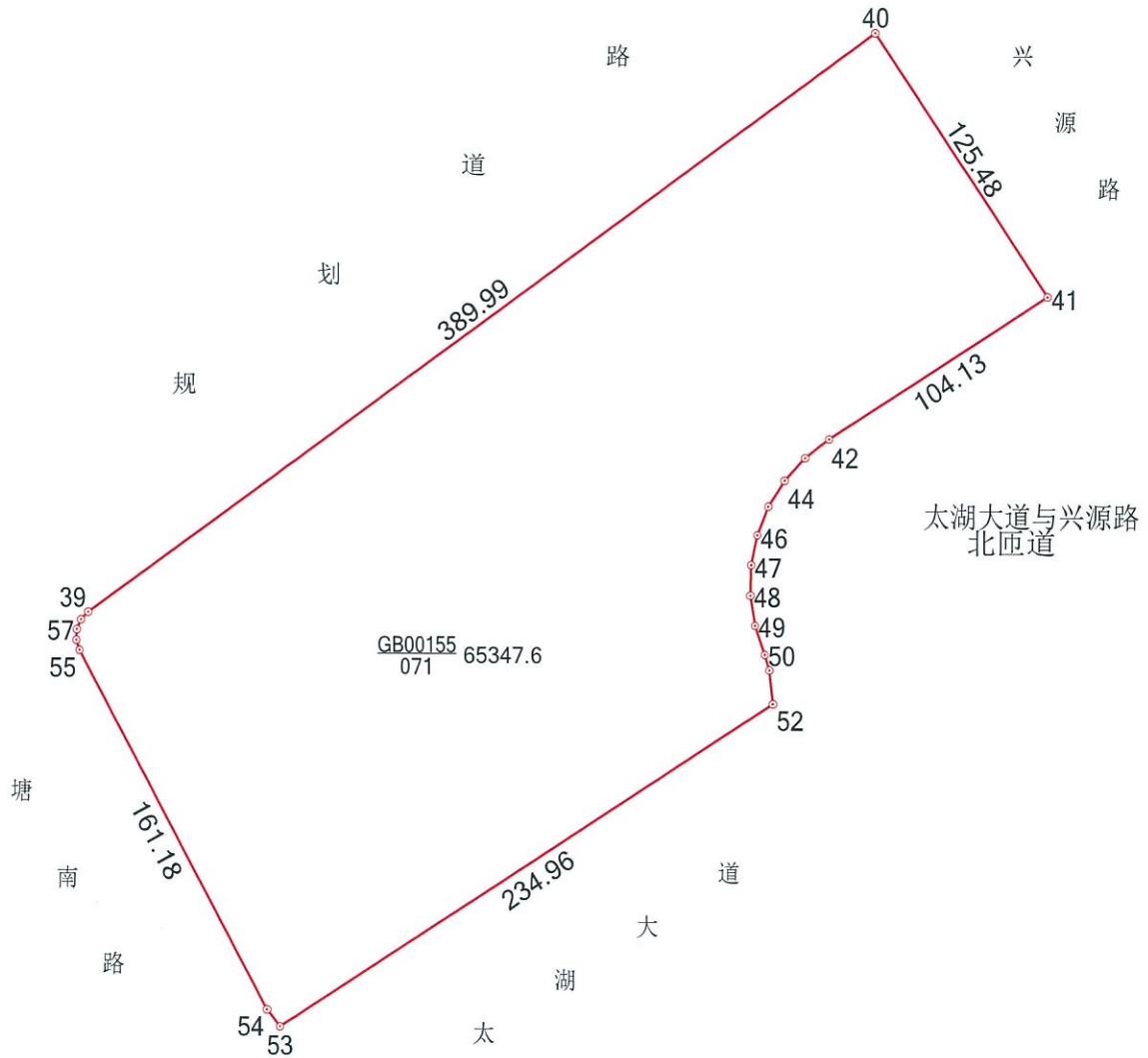
### 界址点坐标

顺序号	点号	坐标		边长 (m)	备注
		X (m)	Y (m)		
33	33.00	3494058.376	40530032.142	7.24	
34	34.00	3494065.614	40530032.213	10.31	
35	35	3494075.765	40530034.021	8.47	
36	36	3494083.547	40530037.368	8.47	
37	37	3494090.663	40530041.963	8.47	
38	38	3494096.916	40530047.677	8.47	
39	1	3494102.131	40530054.352		

# 宗 地 图

3493.75-40530.00,  
3493.75-40530.25,  
3494.00-40530.00

320292014200GB00155



42-43: 12.18	43-44: 12.18
44-45: 12.18	45-46: 12.18
46-47: 12.18	47-48: 12.18
48-49: 12.18	49-50: 12.18
50-51: 6.46	51-52: 13.53
53-54: 8.54	55-56: 4.24
56-57: 4.24	57-58: 4.24
58-39: 4.24	



1:3000

绘图员：杨程

审核员：常鹏

2018年10月9日

## 界址点成果表

宗地号 320292014200GB00155

权利人 XDG-2018-40号B地块

宗地面积 (平方米) 65347.6

折合亩

98.02

### 界址点坐标

顺序号	点号	坐标		边长 (m)	备注
		X (m)	Y (m)		
1	39.00	3493925.985	40530118.588	389.99	
2	40.00	3494157.297	40530432.571	125.48	
3	41	3494052.400	40530501.424	104.13	
4	42	3493995.699	40530414.082	12.18	
5	43	3493988.195	40530404.494	12.18	
6	44	3493979.125	40530396.372	12.18	
7	45	3493968.770	40530389.968	12.18	
8	46	3493957.452	40530385.481	12.18	
9	47	3493945.522	40530383.051	12.18	
10	48	3493933.350	40530382.753	12.18	
11	49	3493921.315	40530384.596	12.18	
12	50	3493909.790	40530388.523	6.46	
13	51	3493903.603	40530390.394	13.53	
14	52	3493890.140	40530391.733	234.96	
15	53	3493761.302	40530195.248	8.54	
16	54	3493768.031	40530189.989	161.18	
17	55.00	3493910.746	40530115.081	4.24	

### 界址点成果表

宗地号 320292014200GB00155

权利人 XDG-2018-40号B地块

宗地面积 (平方米) 65347.6

折合亩

98.02

#### 界址点坐标

顺序号	点号	坐标		边长 (m)	备注
		X (m)	Y (m)		
17	55.00	3493910.746	40530115.081	4.24	
18	56.00	3493914.785	40530113.805	4.24	
19	57	3493919.015	40530114.012	4.24	
20	58	3493922.910	40530115.675	4.24	
21	39	3493925.985	40530118.588		